

NON-CART 2



Recycle These Items



PAPER, CARDBOARD and JUNK MAIL TOO!

NOTE: **Shredded Paper** – put in paper bag or box before recycling.
Junk Mail – window envelopes are OK, remove product samples and plastic cards before recycling.





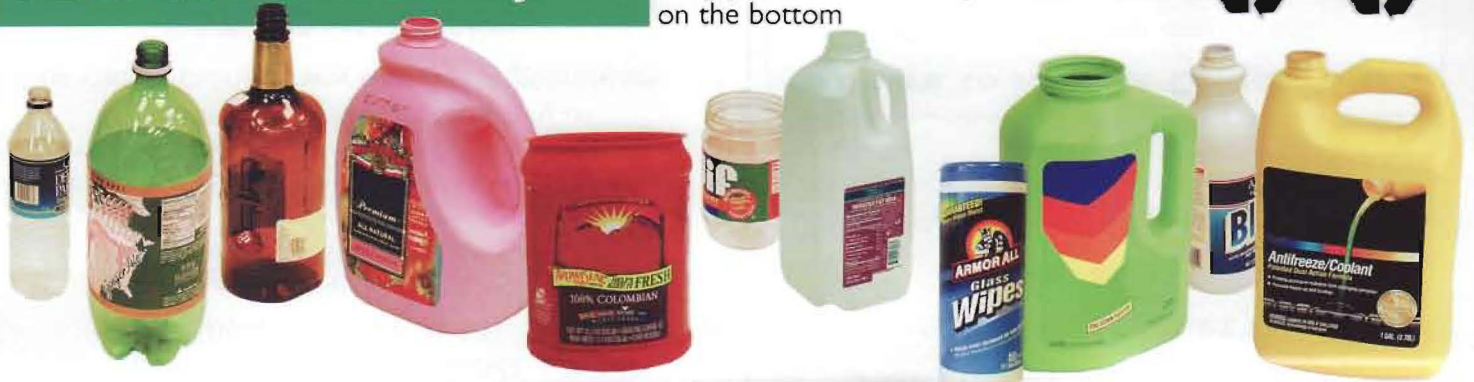
ALUMINUM, STEEL & TIN CANS; GLASS BOTTLES & JARS



Empty
non-hazardous
aerosols

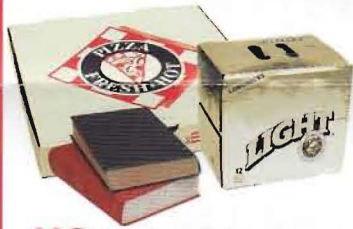
PLASTIC BOTTLES & JARS

Only plastic bottles and jars with a number  or  on the bottom





DO NOT RECYCLE



NO hardback books, foil-coated or food contaminated boxes.



NO plastic pails, trays, tubs, food containers or foil items



NO motor oil, lubricants, paint and pesticide containers



NO mugs, glasses, vases, bulbs, bakeware, dishes, & window glass



NO refrigerated or frozen containers



NO plastic bags, styrofoam, lids or caps

PRINTED ON RECYCLED, RECYCLABLE PAPER • DESIGNED AND PRINTED AT BURLINGTON COUNTY COLLEGE

PUT RECYCLING CURBSIDE BY 6AM

PAPER

Brown bag it
Bundle it • Box it
Use cardboard or rigid box
(laundry basket or milk crate)

CARDBOARD

Please flatten big boxes
Remove styrofoam,
plastic and wood

NEVER PUT PAPER IN Recycling buckets, trash cans or plastic bags



Recycling containers are municipal property –
If used for trash,
they will not be collected

BOTTLES & CANS

Rinse clean
Labels can stay on
Throw away caps & lids

NEVER PUT IN PLASTIC BAGS

REMEMBER
One truck collects paper – another collects bottles & cans

QUESTIONS?

RECYCLING BUCKETS

(609) 387-1881 ext. 100

CURBSIDE RECYCLING ISSUES

609-267-6889, 856-461-4141 or
609-499-1001 ext. 271

Email: recycling@otcbc.org or
recycle@co.burlington.nj.us

GENERAL RECYCLING INFO

609-499-1001 ext. 271

Email: recycle@co.burlington.nj.us
or visit us online at www.co.burlington.nj.us

GET CONNECTED:

To receive automatic email notices from the County Recycling Office about recycling schedule changes, paper shredding days, compost workshops, etc. contact recycle@co.burlington.nj.us.

RECYCLING DROPOFF SITE

For Paper, Cardboard,
Bottles and Cans:

Side of Municipal Building,
Broad Street

HOURS:

Weekdays 8 am–4 pm

Where to Recycle Computers:

Goodwill donation centers will
recycle computers for free.

Remove your sensitive information first.
Go to <http://reconnectpartnership.com>
to find the closest center.

RECYCLING IS THE LAW

It is illegal for a trash collector to pick up
trash mixed with recycling.

Residents, Businesses and Institutions must recycle:

- Aluminum Cans
- Antifreeze
- Cardboard
- Computers
- Fluorescent Lights
- Glass Containers
- Lead Acid Batteries
- Leaves
- Metal Appliances
- Motor Oil
- Paper
- Plastic Bottles (#1 & #2)
- Rechargeable Batteries
- Steel (tin) cans
- Textiles
- Tires

RECYCLING WEBSITES

In addition to municipal recycling programs,
find recycling locations for certain items
at these websites:

www.call2recycle.org

Cell Phones • Rechargeable Batteries

www.Earth911.com

Antifreeze • Compact Fluorescent Lights
Lead Acid Batteries • Used Motor Oil

www.co.burlington.nj.us

(go to **Departments**, then **Recycling**)
Bulky Rigid Plastics • Fluorescent Lights
Metal Appliances • Textiles • Tires